

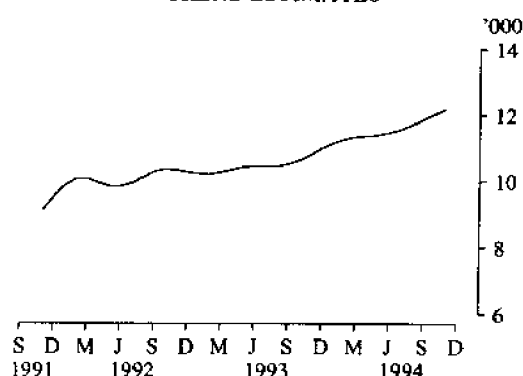
**CATALOGUE NUMBER 9303.2
5 JANUARY 1995**

MOTOR VEHICLE REGISTRATIONS, VICTORIA, NOVEMBER 1994

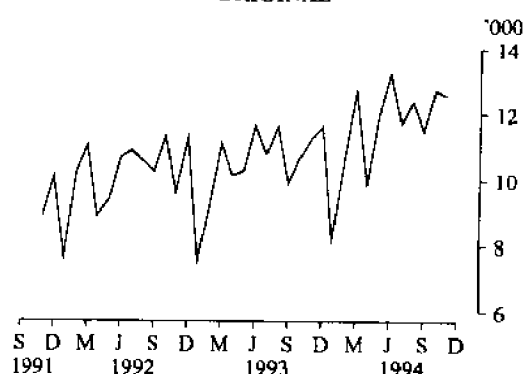
MAIN FEATURES

- Trend estimates of the number of new motor vehicles registered during November 1994 (12,182) showed a 1.1 per cent increase over the figure for October 1994 (12,047) and a 12.6 per cent increase over the figure for November 1993 (10,823). The trend estimate has increased continually since August 1993.
- In original terms the number of new motor vehicles registered during November 1994 (12,551) was 1.5 per cent lower than the previous month (12,743) but 11.6 per cent higher than November 1993 (11,248).
- For the 5 months ended November 1994 there were 52,106 new passenger vehicles registered, which was 11.1 per cent higher than the 46,874 registered during the 5 months ended November 1993.

**NEW MOTOR VEHICLE REGISTRATIONS
TREND ESTIMATES**



**NEW MOTOR VEHICLE REGISTRATIONS
ORIGINAL**



INQUIRIES

For further information about statistics in this publication and the availability of related unpublished statistics, contact Denis Ward or Leon Kinnersly on Melbourne (03) 615 7000; or any ABS State office

For information about other ABS statistics and services contact Information Services on Melbourne (03) 615 7000; or any ABS State office.

TABLE 1. MOTOR VEHICLES ON REGISTER(a), VICTORIA
(^{'000})

<i>As at 30 June</i>	<i>Passenger vehicles</i>	<i>Light commercial vehicles</i>	<i>Trucks</i>			<i>Buses</i>	<i>Total</i>	<i>Motor cycles</i>
			<i>Rigid</i>	<i>Artic- ulated</i>	<i>Non- freight carrying</i>			
1989	2,076.2	195.7	206.5	13.1	11.7	13.9	2,517.1	68.1
1990	2,137.8	194.8	210.7	14.2	13.0	13.8	2,584.3	67.9
1991	2,226.5	349.2	87.0	14.6	11.3	14.4	2,702.9	72.2
1992	2,178.1	322.5	73.0	14.3	11.4	15.6	2,614.9	69.9
1993	2,206.6	324.9	74.2	14.6	11.7	15.9	2,648.0	70.4

(a) See Explanatory notes, paragraphs 3 to 9.

TABLE 2. NEW MOTOR VEHICLES REGISTERED(a), VICTORIA

<i>Period</i>	<i>Passenger vehicles</i>	<i>Light commercial vehicles</i>	<i>Trucks</i>			<i>Buses</i>	<i>Total</i>	<i>Motor cycles</i>
			<i>Rigid</i>	<i>Artic- ulated</i>	<i>Non- freight carrying</i>			
1991-92	98,766	11,080	1,832	406	184	649	112,917	3,878
1992-93	106,213	14,137	2,008	571	166	795	123,890	4,528
1993-94	113,249	15,442	2,077	907	119	658	132,452	4,400
1993-94 —								
September	8,440	1,164	172	68	10	40	9,894	347
October	9,222	1,100	171	78	10	48	10,629	356
November	9,660	1,286	168	82	7	45	11,248	404
December	10,005	1,264	196	86	14	43	11,608	411
January	7,148	806	109	49	6	55	8,173	411
February	9,288	1,138	156	70	3	45	10,700	423
March	10,864	1,484	204	78	10	73	12,713	391
April	8,347	1,272	136	71	14	45	9,885	337
May	9,970	1,619	198	97	10	56	11,950	329
June	10,753	2,066	233	88	6	100	13,246	350
1994-95 —								
July	9,827	1,463	228	124	2	75	11,719	377
August	10,557	1,431	222	95	13	64	12,382	352
September	9,972	1,153	194	102	8	60	11,489	464
October	10,975	1,359	194	130	7	78	12,743	452
November	10,775	1,416	172	108	11	69	12,551	436
1993-94 —								
July - November	46,874	5,793	845	368	56	241	54,177	1,748
1994-95 —								
July — November	52,106	6,822	1,010	559	41	346	60,884	2,081

(a) See Explanatory notes, paragraphs 3 to 9.

TABLE 3. NEW MOTOR VEHICLES REGISTERED VICTORIA(a), ORIGINAL AND SEASONALLY ADJUSTED

Period	Passenger vehicles		Other vehicles(b)		Total(b) (c)		
	Original	Seasonally adjusted	Original	Seasonally adjusted	Original	Seasonally adjusted	Trend estimate(d)
MELBOURNE STATISTICAL DIVISION							
1993-94 —							
September	6,786	6,405	909	868	7,695	7,273	7,998
October	7,364	7,285	855	877	8,219	8,162	8,109
November	7,672	7,540	934	942	8,606	8,482	8,283
December	7,885	7,143	981	994	8,866	8,137	8,438
January	5,628	8,067	601	856	6,229	8,923	8,563
February	7,334	7,840	835	920	8,169	8,760	8,651
March	8,594	7,797	1,170	1,069	9,764	8,866	8,700
April	6,428	6,973	992	1,057	7,420	8,030	8,680
May	7,673	7,573	1,242	1,088	8,915	8,661	8,666
June	8,336	8,014	1,564	1,432	9,900	9,446	8,683
1994-95							
July	7,674	7,445	1,083	1,017	8,757	8,462	8,754
August	8,408	7,476	1,167	1,095	9,575	8,571	8,864
September	7,943	7,542	909	861	8,852	8,403	8,982
October	8,707	9,121	1,041	1,070	9,748	10,191	9,110
November	8,413	7,842	1,062	1,071	9,475	8,913	9,186
1993-94 —							
July — November	37,299	36,085	4,355	4,239	41,654	40,323	40,356
1994-95 —							
July — November	41,145	39,427	5,262	5,114	46,407	44,541	44,896
TOTAL VICTORIA							
1993-94 —							
September	8,440	8,167	1,454	1,519	9,894	9,686	10,506
October	9,222	9,080	1,407	1,426	10,629	10,506	10,635
November	9,660	9,528	1,588	1,615	11,248	11,143	10,823
December	10,005	9,282	1,603	1,640	11,608	10,921	11,004
January	7,148	9,883	1,025	1,481	8,173	11,365	11,164
February	9,288	9,733	1,412	1,532	10,700	11,264	11,289
March	10,864	9,779	1,849	1,724	12,713	11,503	11,371
April	8,347	9,379	1,538	1,628	9,885	11,008	11,392
May	9,970	9,688	1,980	1,763	11,950	11,451	11,421
June	10,753	9,912	2,493	1,983	13,246	11,895	11,478
1994-95 —							
July	9,827	9,699	1,892	1,788	11,719	11,487	11,576
August	10,557	9,664	1,825	1,750	12,382	11,414	11,714
September	9,972	9,872	1,517	1,601	11,489	11,474	11,875
October	10,975	10,937	1,768	1,773	12,743	12,710	12,047
November	10,775	10,392	1,776	1,797	12,551	12,189	12,182
1993-94 —							
July — November	46,874	45,583	7,303	7,274	54,177	52,858	52,906
1994-95 —							
July — November	52,106	50,565	8,778	8,709	60,884	59,274	59,394

(a) See Explanatory notes, paragraphs 3 to 9. (b) Excludes motor cycles, tractors, plant and equipment, caravans and trailers. (c) See paragraph 2 of the Explanatory notes. (d) Trend estimate (smoothed seasonally adjusted) series are revised as additional observations become available. See paragraph 11 of the Explanatory notes.

**TABLE 4. MAKES OF NEW PASSENGER VEHICLES REGISTERED(a), VICTORIA,
NOVEMBER 1994**

Make	Vehicle tare weight (kilograms)						Total	Per cent	M.S.D.
	Up to 900	901 to 1,100	1,101 to 1,300	1,301 to 1,500	Over 1,500	Not stated			
Ford	104	298	109	1,583	729	-	2,823	26.2	2,076
Holden	80	85	719	1,230	120	-	2,234	20.7	1,756
Honda	3	204	163	25	8	-	403	3.7	352
Hyundai	20	373	49	5	-	-	447	4.1	335
Mazda	132	107	216	10	13	-	478	4.4	413
Mitsubishi	126	113	137	778	129	-	1,283	11.9	1,002
Nissan	-	109	82	85	81	-	357	3.3	291
Toyota	2	490	489	309	337	-	1,627	15.1	1,265
Other makes	225	169	358	239	132	-	1,123	10.4	923
Total	692	1,948	2,322	4,264	1,549	-	10,775	100.0	8,413

(a) See Explanatory notes, paragraphs 3 to 9.

**TABLE 5. MAKES OF NEW LIGHT COMMERCIAL VEHICLES REGISTERED(a),
VICTORIA, NOVEMBER 1994**

Make	Vehicle tare weight (kilograms)						Total	Per cent	M.S.D.
	Up to 900	901 to 1,100	1,101 to 1,300	1,301 to 1,500	Over 1,500	Not stated			
Ford	2	1	60	189	38	-	290	20.5	154
Holden	1	-	126	103	54	-	284	20.1	184
Mazda	-	10	52	71	17	-	150	10.6	124
Mitsubishi	-	-	87	19	31	-	137	9.7	74
Nissan	-	-	4	35	48	-	87	6.1	48
Toyota	-	-	126	201	99	-	426	30.1	226
Other makes	13	10	1	3	15	-	42	3.0	23
Total	16	21	456	621	302	-	1,416	100.0	833

(a) See Explanatory notes, paragraphs 3 to 9.

**TABLE 6. MAKES OF NEW RIGID TRUCKS REGISTERED(a), VICTORIA,
NOVEMBER 1994**

Make	Gross vehicle mass (tonnes) (b)								Total	Per cent	M.S.D.
	Up to 4	4.001 to 8	8.001 to 12	12.001 to 16	16.001 to 20	20.001 to 30	Over 30	Not stated			
Ford	-	1	5	-	-	-	-	2	8	4.7	7
Hino	-	-	-	-	7	10	-	6	23	13.4	22
International	-	-	-	-	-	2	-	21	23	13.4	17
Isuzu	-	1	8	7	16	8	-	10	50	29.1	43
Mazda	-	-	5	6	-	-	-	11	11	6.4	10
Mitsubishi	-	1	11	2	6	3	-	4	27	15.7	12
Nissan	-	-	-	-	-	2	-	1	3	1.7	3
Toyota	-	2	7	3	-	-	-	-	12	7.0	9
Other makes	-	1	1	-	-	2	-	11	15	8.7	8
Total	-	6	37	18	29	27	-	55	172	100.0	131

(a) See Explanatory notes, paragraphs 3 to 9. (b) Gross vehicle mass is the maximum permissible weight of the loaded vehicle.

TABLE 7. MAKES OF NEW ARTICULATED TRUCKS REGISTERED(a), VICTORIA, NOVEMBER 1994

Make	Gross combination mass (tonnes) (b)							Not stated	Total	Per cent	M.S.D.
	Up to 16	16.001 to 20	20.001 to 24	24.001 to 30	30.001 to 34	34.001 to 40	Over 40				
Ford	2	3	1	3	-	-	-	-	9	8.3	2
International	-	6	1	10	-	-	-	2	19	17.6	8
Kenworth	-	10	1	10	1	-	-	4	26	24.1	10
Mack	1	13	1	8	-	-	-	2	25	23.1	9
Mercedes-Benz	-	-	-	2	-	-	-	1	3	2.8	2
Scania	-	3	2	-	-	-	-	-	5	4.6	2
Volvo	-	5	1	6	-	-	-	1	13	12.0	8
Western Star	-	5	-	1	-	-	-	1	7	6.5	-
Other makes	-	-	-	1	-	-	-	-	1	0.9	1
Total	3	45	7	41	1	-	-	11	108	100.0	42

(a) See Explanatory notes, paragraphs 3 to 9. (b) Gross combination mass is the maximum permissible weight of the prime mover plus attached loaded trailer.

TABLE 8. MAKES OF NEW NON-FREIGHT CARRYING TRUCKS AND BUSES REGISTERED(a), VICTORIA, NOVEMBER 1994

Make	Non-freight carrying trucks				Buses			
	M.S.D.	Rest of Victoria	Total	Per cent	M.S.D.	Rest of Victoria	Total	Per cent
Ford	-	-	-	-	-	-	-	-
Iino	-	-	-	-	4	9	13	18.8
Isuzu	8	-	8	72.7	-	-	-	-
Mazda	1	-	1	9.1	2	-	2	2.9
Mercedes-Benz	-	1	1	9.1	4	3	7	10.1
Mitsubishi	-	-	-	-	-	-	-	-
Nissan	-	-	-	-	-	-	-	-
Scania	-	-	-	-	3	-	3	4.3
Toyota	-	-	-	-	31	10	41	59.4
Other makes	1	-	1	9.1	2	1	3	4.3
Total	10	1	11	100.0	46	23	69	100.0

(a) See Explanatory notes, paragraphs 3 to 9.

TABLE 9. NEW MOTOR CYCLES REGISTERED, VICTORIA, NOVEMBER 1994

Make	Cubic capacity of engine (cc)							Total	Per cent	M.S.D.
	Up to 50	51 to 150	151 to 250	251 to 500	501 to 750	Over 750	Not stated			
Harley Davidson	-	-	-	-	-	71	-	71	16.3	45
Honda	2	42	28	1	42	30	-	145	33.3	103
Kawasaki	-	1	28	1	14	15	-	59	13.5	28
Suzuki	-	3	14	3	3	12	-	35	8.0	15
Yamaha	3	-	44	2	22	17	-	88	20.2	44
Other makes	-	1	7	6	7	17	-	38	8.7	21
Total	5	47	121	13	88	162	-	436	100.0	256

**TABLE 10. NEW MOTOR VEHICLES REGISTERED(a), BY NUMBER OF CYLINDERS,
VICTORIA, NOVEMBER 1994**

<i>Number of cylinders</i>	<i>Passenger vehicles</i>	<i>Light commercial vehicles</i>	<i>Trucks</i>			<i>Buses</i>	<i>Total</i>	<i>Per cent</i>
			<i>Rigid</i>	<i>Artic- ulated</i>	<i>Non- freight carrying</i>			
Four	4,839	995	60	6	9	29	5,938	47.3
Six	5,387	373	110	94	2	38	6,004	47.8
Eight	339	29	1	6	-	-	375	3.0
Other	85	13	-	-	-	-	98	0.8
Not stated	125	6	1	2	-	2	136	1.1
Total	10,775	1,416	172	108	11	69	12,551	100.0

(a) See Explanatory notes, paragraphs 3 to 9.

**TABLE 11. NEW PLANT AND EQUIPMENT, CARAVANS, AND TRAILERS
REGISTERED, NOVEMBER 1994**

<i>Type</i>	<i>M.S.D.</i>	<i>Rest of Victoria</i>	<i>Total</i>
Mobile plant, equipment, etc.	56	27	83
Caravans	83	78	161
Trailers	682	651	1,333
Total	821	756	1,577

EXPLANATORY NOTES

Introduction

This publication contains detailed information regarding registrations of new motor vehicles and includes particulars of passenger vehicles and light commercial vehicles classified by make and tare, and rigid and articulated trucks by make and gross vehicle mass/gross combination mass. Details of registrations of non-freight carrying trucks, buses, motor cycles, trailers, caravans, and plant and equipment are also included, as are particulars of motor vehicles on register.

Scope and coverage

2. Motor vehicle registration statistics are obtained from data made available by VIC ROADS and reflect the information as recorded in registration documents. In these statistics, registrations mean registrations processed by VIC ROADS during the period. In Victoria, registrations are not processed by the VIC ROADS until some time after the actual date of registration; for this reason, a number of registrations processed in a given month actually relate to vehicles registered prior to that month. During November 1994 the proportion of registrations processed by VIC ROADS that relate to the reference month was 99.6 per cent, with the remaining 0.4 per cent relating to earlier periods.

The statistics include vehicles with diplomatic and consular plates and government-owned vehicles other than those belonging to the defence services.

Although registration of recreation vehicles intended for use in public places other than roads is compulsory, particulars of such vehicles are excluded from statistics contained in this publication.

Recent changes in processing procedures implemented by the Roads Corporation may impact on statistics contained in this publication. Care should therefore be taken when using these statistics.

Classification of vehicles

3. The decoding of the Vehicle Identification Number (VIN) has resulted in better identification of each vehicle's bodycode and consequently classification of vehicles to particular categories. Vehicles such as microbuses which, in the old system, had been classified to cars and station wagons in some States but to buses in other States, are now consistently classified. Similarly, in the old system utilities and cab-chasses, which were sometimes classified to small trucks, are now consistently classified to utilities. In addition, duplicate records, out of scope vehicles and those vehicles not registered for the first time can now be more accurately identified and therefore excluded from the statistics.

Vehicle Type Definitions

4. *Passenger Vehicles.* Vehicles constructed primarily for the carriage of less than 10 passengers (including the driver). Included are cars, station wagons, 4WD passenger vehicles and forward control passenger vehicles.

5. *Light Commercial Vehicles.* Vehicles constructed primarily for the carriage of goods and do not exceed 3.5 tonnes gross vehicle mass (GVM). Included are utilities, panel vans, cab-chassis and forward control vehicles (whether 4WD or not).

6. *Rigid Trucks.* Vehicles constructed primarily for load carrying with gross vehicle mass (GVM) exceeding 3.5 tonnes. Included are normal rigid trucks with a tow bar, draw bar or other non-articulated coupling on the rear for use with a trailer or dolly.

7. *Articulated Trucks.* Vehicles constructed primarily for load carrying consisting of a prime mover having no significant load carrying area but with a turn table device which can be linked to a trailer. The gross combination mass (GCM) will exceed 3.5 tonnes with or without a trailer.

8. *Non-freight Carrying Trucks.* Includes specialist vehicles such as ambulances or mobile cranes or vehicles fitted with special purpose equipment and having no goods carrying capacity.

9. *Omnibuses.* Includes all passenger vehicles having more than nine seats, including the driver.

Seasonal adjustment

10. Original and seasonally adjusted registrations of new motor vehicles are shown in Table 3. The two component series 'Passenger vehicles' and 'Other vehicles' are each adjusted separately, and the adjusted figures for total registrations are obtained by adding together the two component series. In the seasonally adjusted series, account has been taken of normal seasonal factors and 'trading day' effects (arising from the varying numbers of Sundays, Mondays, Tuesdays, etc. in the month) and the effect of movement in the date of Easter which may, in successive years, affect figures for different months.

Seasonally adjusted statistics should not be regarded as in any way definitive. In interpreting particular seasonally adjusted statistics it is important to bear in mind the methods by which they have been derived and the limitations to which the methods used are subject.

Seasonal adjustment is a means of removing the estimated effects of normal seasonal variation from the series so that the effects of other influences on the series may be more clearly recognised. Seasonal adjustment procedures do not aim to remove the irregular or non-seasonal influences which may be present in any particular months, such as the effect of introducing new models or of industrial disputes. Irregular influences that are highly volatile can make it difficult to interpret the movement of the series even after adjustment for seasonal variation.

11. The seasonally adjusted series can, however, be smoothed to reduce the impact of the irregular component in the adjusted series. This smoothed seasonally adjusted series is called a trend estimate. Trend estimates of motor vehicle registration statistics are shown in Table 3. The trend estimates have been derived by applying a 13-term Henderson-weighted moving average to the series.

While this technique enables smoothed data for the latest period to be produced, it does result in revisions to the smoothed series for the most recent months as additional observations become available. There may also be revisions as a result of changes in the original data, and as a result of the re-estimation of the seasonal factors.

Motor vehicles on register

12. Censuses of motor vehicles on register have been conducted in respect of 31 December 1955 and 1962, and 30 September 1971, 1976, 1979, 1982, 1985, 1988 and 1991. From December 1976, details of Commonwealth Government-owned vehicles on register are only available at 31 December each year.

For 30 June estimates, the previous 31 December figures for Commonwealth Government-owned vehicles are used. Motor vehicles on register at a given date are vehicles for which either fees were paid in advance, on that date, or retrospectively. Figures for motor vehicles on register prior to June 1982 were derived from estimates of the previous Census of Motor Vehicles. From June 1982 onwards, motor vehicles on register figures have been collected from the Roads Corporation.

Unpublished tables

13. Various tabulations of a more detailed nature than those contained in this publication are available in the form of computer printouts for inspection in this Office. It is recommended that inquiries regarding the availability of unpublished statistics be made by telephoning in the first instance. In general a charge is made for supply of such tabulations.

Related publications

14. Users may also wish to refer to the following ABS publications which are available on request:
Registrations of New Motor Vehicles, Australia, Preliminary (9301.0) (monthly) (\$12.00)
Motor Vehicle Registrations, Australia (9303.0) (monthly) (\$12.00)
Motor Vehicle Registrations, Australia (9304.0) (annual) (\$25.00)
Motor Vehicle Census, Australia (9309.0) (irregular)

Current publications produced by the ABS are listed in the *Catalogue of Publications, Australia* (1101.0). The ABS also issues, on Tuesdays and Fridays, a *Publications Advice* (1105.0) which lists publications to be released in the next few days. These are available from any ABS Office.

Electronic services

A large range of data is available via on-line services, diskette, magnetic tape, tape cartridge and CD ROM. For more details about our electronic data services, contact any ABS Office.

Symbols and other usages

r figure or series revised since previous issue
 - nil or rounded down to zero
 M.S.D. Melbourne Statistical Division
 n.a. not available

Where figures have been rounded, discrepancies may occur between sums of the component items and totals.

STUART JACKSON

Deputy Commonwealth Statistician

